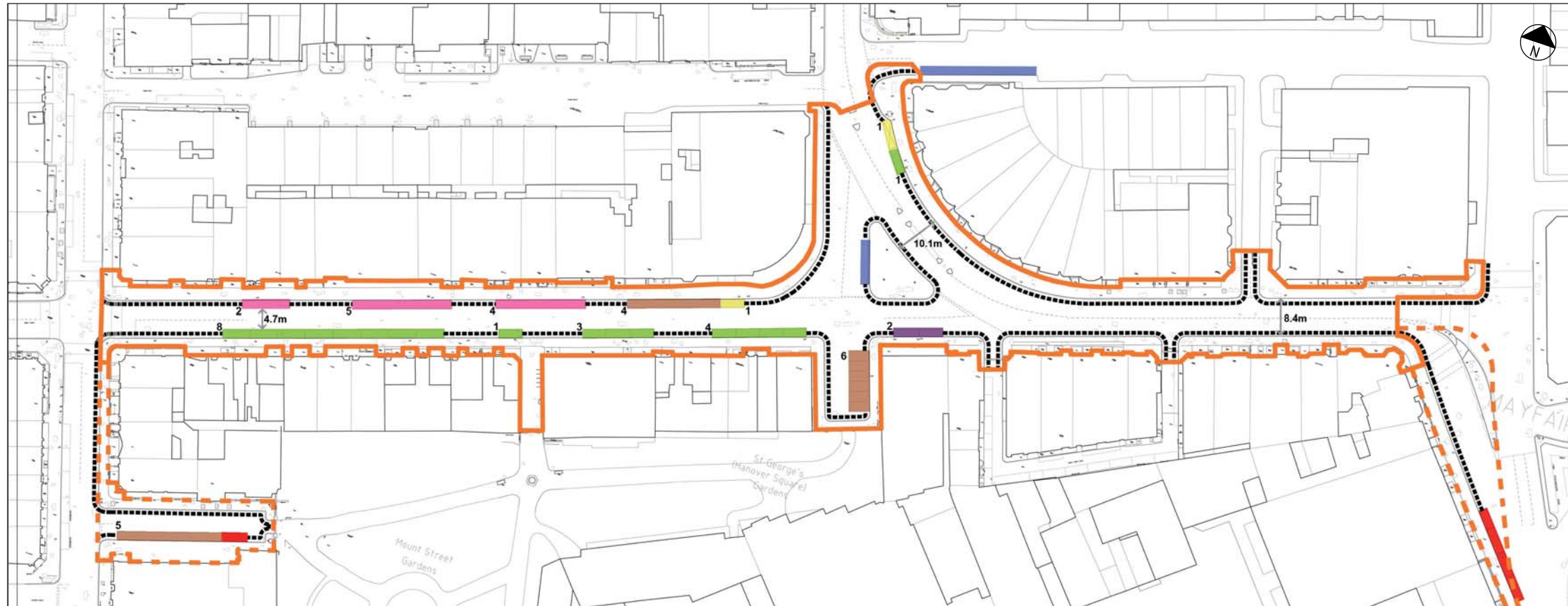
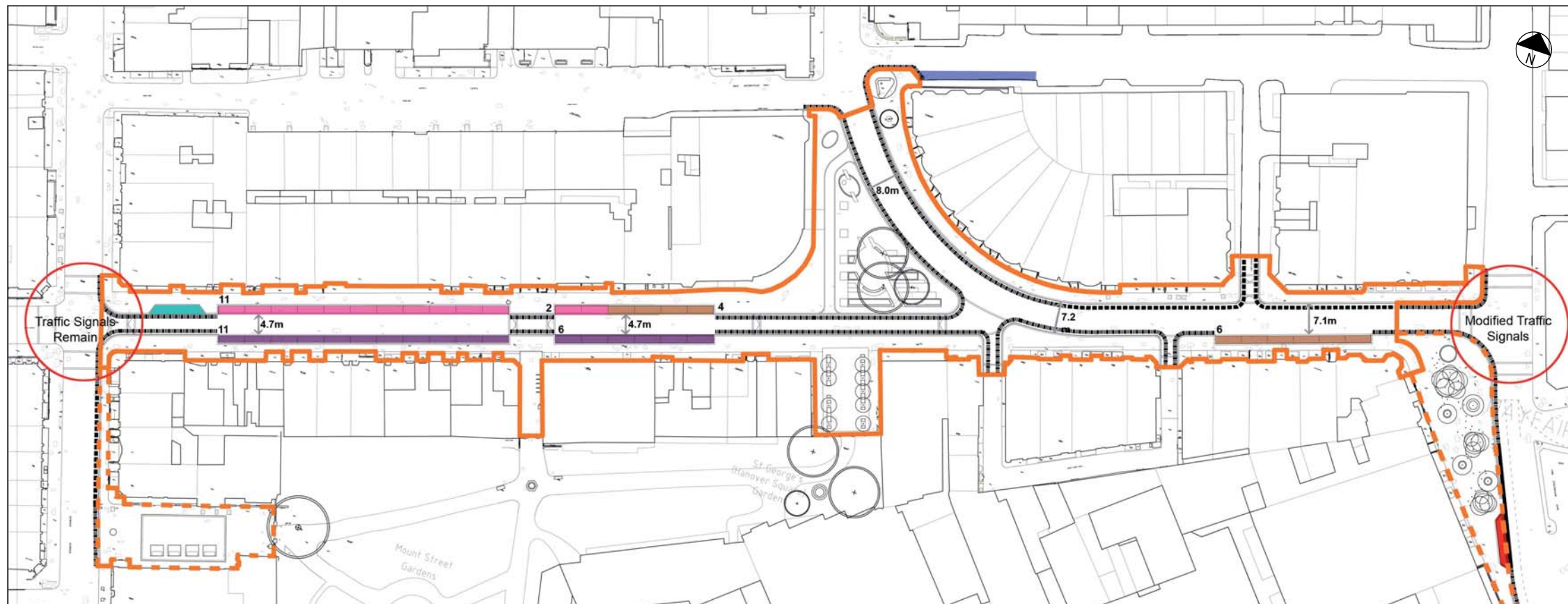


Existing Parking Arrangement



- SCHEME AREA ONLY**
- Resident Only Spaces: 10
 - Resident/Pay by Phone (Shared Use) Spaces: 11
 - Pay by Phone Spaces: 2
 - Pay and Display Spaces: 17
 - Diplomat Spaces: 2
 - Taxi Waiting Spaces: 7
 - Loading Pad: 0
- TOTAL PARKING SPACES: 42**
TOTAL TAXI WAITING SPACES: 7
- POSSIBLE EXTENSION AREAS**
- Resident Only Spaces: 5
 - Motorcycle Zone
- TOTAL PARKING SPACES: 5**
- Single Yellow Line
 - Double Yellow Line

Proposed Parking Arrangement



- SCHEME AREA ONLY**
- Resident Only Spaces: 10
 - Resident/Pay by Phone (Shared Use) Spaces: 13
 - Pay by Phone Spaces: 17 (Pay and Display spaces converted to Pay by Phone spaces)
 - Diplomat Spaces: 0
 - Taxi Waiting Spaces: 5
 - Loading Pad: 1
- TOTAL PARKING SPACES: 40**
TOTAL TAXI WAITING SPACES: 5
- POSSIBLE EXTENSION AREAS**
- Resident Only Spaces: 5
 - Motorcycle Zone
- TOTAL PARKING SPACES: 5**
(Replacement spaces to be provided through the conversion of paid for parking to residents only parking on South Audley Street)
- Single Yellow Line
 - Double Yellow Line